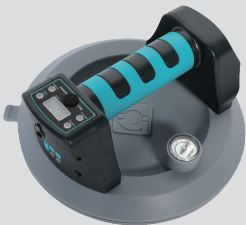




SCBC8

Usage Instructions

## 8" Battery Powered Vacuum Suction Cup



Using Video



Read before use



## 1. Safety Warnings

### ▲ Caution

Read all safety instructions and warnings provided. Failure to follow the instructions below may result in serious injury.

Keep all warnings and instructions for future reference.

#### Safety warnings from the manufacturer

- Ensure surface of to be lifted material is dry and clean.
- Check vacuum cups for damage or perishing or glazing.
- NEVER use the lifer to support a person.
- NEVER use the liter when the red line on the plunger is visible.
- NEVER attach ropes or chains directly to handle. Lifter is for hand lifting tasks only.
- NEVER touch the thumb release plate during lifting.
- NEVER interfere with free movement of the plunger during lifting
- Use within range: -12 to 49 °C (10 to 120 °F)
- Use below 1524 metre (5000 feet) elevation.

If there is any question about a condition being safe or unsafe. **DO NOT** use the product.

#### Use and care of the battery tool

- Charge the batteries only with chargers recommended by the manufacturer.** A charger suitable for a particular type of battery may cause a fire when used with other batteries.
- Use only the appropriate batteries in the power tools.** Use of other batteries may cause injury or fire.
- Keep the unused battery away from paper clips, coins, keys, nails, screws, or other small metal objects that could cause the contacts to bridge.** A short circuit between the battery contacts can cause burns or fire.
- If used incorrectly, liquid may leak from the battery. Avoid contact with it. In case of accidental contact, rinse with water. If the fluid gets into your eyes, seek additional medical attention.** Leaking battery fluid may cause skin irritation or burns.
- Do not use a damaged or modified battery.** Damaged or altered batteries can behave unpredictably and cause fire, explosion or injury.
- Do not expose a battery to fire or high temperatures.** Fire or temperatures over 130 °C can cause an explosion.
- Follow all charging instructions and never charge the battery or the cordless tool outside the temperature range specified in the operating instructions.** Incorrect charging or charging outside the permitted temperature range can destroy the battery and increase the risk of fire.
- If the lithium-ion battery is not used for extended time, please charge the lithium-ion battery once every 6 months, each charging time is not less than 8 hours.

## 2. Application

- For carry large porcelain or stone tiles and glass, even for rough surfaces
- Max. lifting capacity is 130Kg(286lbs)

Battery working time	2 hours
Battery charging time	3 hours
Type of battery	26500-3200mAh
Watts	3.7V

### 3. Using Instruction

- If the device is not used for a long period of time, please fully charge and remove the battery. Please store the battery in a dry and room temperature environment.
- If the lithium battery is not used for extended time, please charge the lithium battery once every 6 months, each charging time is not less than 6 hours.
- \* The red warning indicator line or monitor clock in red area during lift indicates gradual loss of vacuum suction and need to re-pumping.



#### 3.1 Operation Mode

- Place the suction cup on the material to be absorbed
- Press the switch for a second to turn on the machine and the vacuum suction will start to work
- To release - Quick press two times to release suction then remove it away from the material
- Long press to turn off the machine

#### 3.2 Anti-error Operation

- During working, press the switch for 5-10 seconds to turn off the digital panel
- Press the switch for 5-10 seconds more, turn on the digital panel again, then quick press two times to release suction then remove it away from the material

#### 3.3 Auto Replenish Vacuum Mode

- Pressure monitor clock shows within the green area means safe handling vacuum.
- The machine will auto replenish the vacuum when under 360mmHg

#### 3.4 Charging Mode

- Charge the battery when the low battery indicator flashes or digital panel didn't display full numbers due to low power.
- USB Type-C charger



#### 4. Cleaning and Maintenance

- To remove glaze from rubber pad, scrub with cloth soaked in soapy water. Keep it down to prevent liquid getting inside.
- If pump leaks, remove plunger and wipe surrounding surfaces and handle interior with soft, lint free cloth.
- Re-coat rubber cup with SILICONE GREASE (rubber grease) ONLY. NEVER use oil based lubricants.
- NEVER use solvent to clean lifer.
- NEVER lay face down on rough/contaminated surface.
- Store in carry case. Ensure lifter well-placed.

#### 5. Regular Inspection

##### Periodically test for:

- Excessive leakage, sluggish pump action, increase in pumping required for full evacuation.
- Examine handle and plunger for cracks.
- Examine rubber pad for: excessive glaze, powder, dirt, oil, cuts, damage/perishing, roughness.

#### 6. Warranty

- The guarantee covers all manufacturing or assembly defects in accordance with the legislation in force. The guarantee does not cover malfunctions caused by improper use, overloads, failure to follow the operating instructions and normal wear and tear.
- For more details and information, consult the general guarantee conditions at [www.bihuitools.com](http://www.bihuitools.com)

#### 7. Trouble Shooting

Problem	Reasons	Solution
Can not power on	1. Battery out of power 2. Battery damage 3. Chip damage	1. Battery charging 2. Replace battery 3. Replace chip
Can not suck air	1. Surface not clean 2. Disk damage 3. Internal air leakage	1. Clean disk 2. Replace chassis 3. Rerepair inspection
Inflate frequently	1. Surface not clean 2. Internal air leakage	1. Clean disk 2. Rerepair inspection
Unable to deflated	1. Air release valve damage 2. Chip damage	1. Replace Air release valve 2. Replace Chip
E01	Low output	Charging