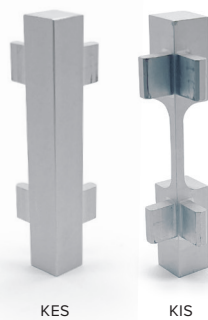
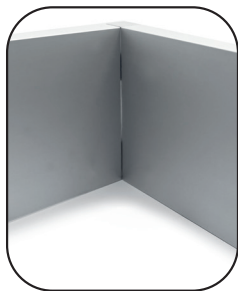
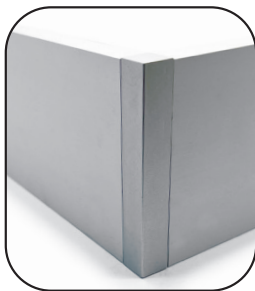
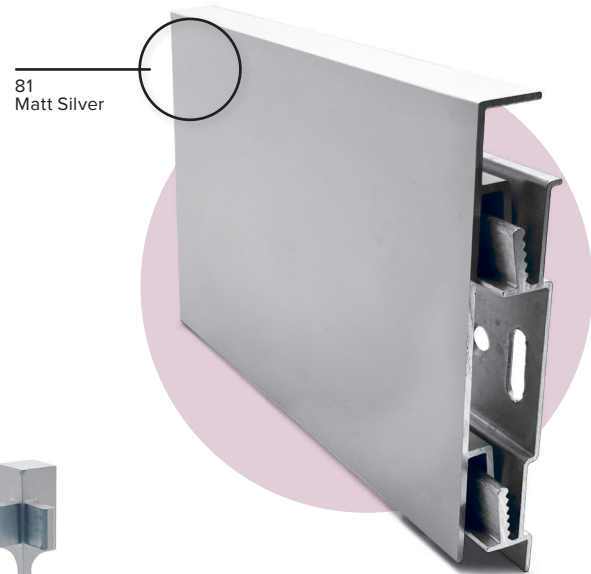
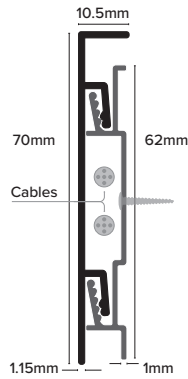


KSC



Product Description

KSC is an anodised aluminium skirting profiles which allows you to cover and protect low running cables around the perimeter, providing an attractive finish to low wall corners. The internal interlocking clip is fixed to the wall with screws, which are supplied, to provide a solid foundation. The top section simply clips into place.

Technical Details

Genesis Aluminium Skirting Profiles are available in a range of anodised and powder coated finishes. Natural aluminium (Mill Finish) has an oxide film of approx. 0.2 microns. When mechanically and chemically polished the anodising process increases this 5 microns, with the matt finish offering up to 20 microns and 100 microns for powder coated finishes.

Aluminium AA 6063 T6 / UNS A96063 anodised to DIN 17611

Si%	0.2-0.6
Fe%	0.35
Cu%	0.1
Mn%	0.1
Mg%	0.45-0.9
Zn%	0.1
Cr%	<0.01
Al	Balance

Maintenance

Genesis KSC profiles do not require any special maintenance. Oxidation films on Aluminium may be removed with a common polishing agent; however, they do reoccur. Damaged anodised finishes may only be repaired by re-coating.

Aluminium must be tested to verify its suitability if chemical stresses are anticipated.

Cementitious materials, in conjunction with moisture, become alkaline. Since aluminium is sensitive to alkaline substances, exposure to the alkali (depending on the concentration and time of exposure) may result in corrosion (aluminium hydroxide formation). Therefore, it is important to remove adhesive or grout residue from visible surfaces. In addition, ensure that the profile is solidly embedded in the setting material and that all cavities are filled to prevent the collection of alkaline water.

The anodised layer creates a finish that retains a uniform appearance during normal use. The surface, however, is susceptible to scratching and wear and may be damaged by tile adhesive, mortar, or grouting material.

Therefore, setting materials must be removed immediately. Otherwise, the description regarding aluminium applies.

Dimensions

Available in a 70mm height and 2.7m length.

Installation

Ensure that the surface where the KSC profile is being applied is smooth, dry and free from any contaminants such as loose paint, dust and grease.

1. Remove the brackets from the packaging, (7 per 2.7 m length) and fix to the wall using a suitable fixing for the substrate.
2. Measure and cut the metal skirting to the required length using a proprietary blade for the material and cutting tool used.
3. Once all brackets are fixed, place the profile onto the bracket.
4. To provide neat finishes to cut ends, preformed internal and external corners along with end caps and joints are recommended.