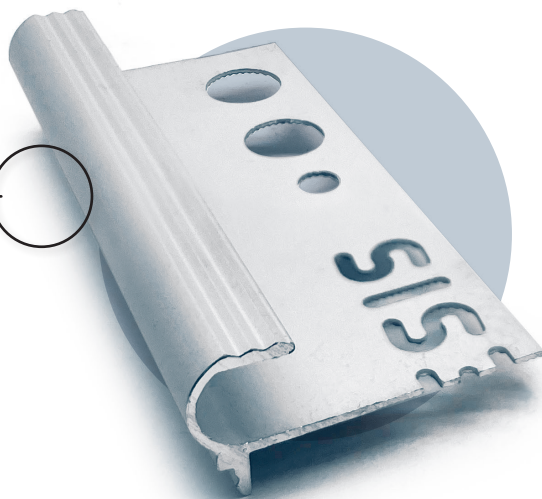
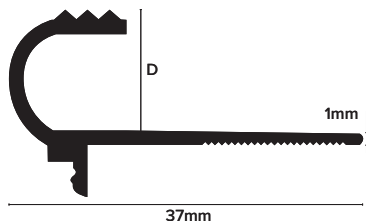


NAT



Product Description

Genesis NAT is an attractive slender profile designed to enhance the step installation and protect the edge of the floor covering from impact damage. It also provides a little grip on the edge of the step to prevent slipping. The flange sits underneath flat tile and also forms a locking locator for the riser tile. The neat rounded face highlights the edge of the step as well as protecting it.

Technical Details

Aluminium AA 6063 T6 / UNS A96063 anodised to DIN 17611	
Si%	0.2-0.6
Fe%	0.35
Cu%	0.1
Mn%	0.1
Mg%	0.45-0.9
Zn%	0.1
Cr%	<0.01
Al	Balance

External Use

Bright and brushed finishes are not suitable for environments with direct UV exposure or where mechanical cleaning operations occur.

Maintenance

Genesis NAT does not require any special maintenance. Oxidisation film on Aluminium may be removed with a common polishing agent; however, they do reoccur.

Damaged anodised finishes may only be repaired by re-coating. Aluminium must be tested to verify its suitability if chemical stresses are anticipated. Cementitious materials, in conjunction with moisture, become alkaline.

Since aluminium is sensitive to alkaline substances, exposure to the alkali (depending on the concentration and time of exposure) may result in corrosion (aluminium hydroxide formation). Therefore, it is important to remove adhesive or grout residue from visible surfaces.

In addition ensure that the profile is solidly embedded in the setting material and that all cavities are filled to prevent the collection of alkaline water. The anodised layer creates a finish that retains a uniform appearance during normal use. The surface, however, is susceptible to scratching and wear and may be damaged by tile adhesive, mortar, or grouting material.

Therefore, setting materials must be removed immediately. Otherwise, the description regarding Aluminium applies.

Dimensions

Available in 2.6m length and 10 and 12mm depth.

Installation

When installing with tile adhesive this should offer adequate fixing, however, if required most tile in nosings offer a mechanic fixing method using 5mm holes within the flange making them suitable for Wood and Laminate floors that do not require tile adhesive.

1. Check the fit of the nosing and ensure the profile is the correct height and width for the step and floorcovering.
2. Install the floorcovering on the riser.
3. Place the nosing firmly on the step and if necessary mark the floor.
4. Drill and Plug the floor if Mechanically fixing.
5. Apply the adhesive using a suitable notched trowel to the manufacturers recommendations.
6. Bed the profile into the adhesive ensuring that the adhesive comes through all the flange holes, spread the adhesive over the top of the flange before installing tiles.
7. A grout gap is not required however if visible ensure that grout is compressed firmly within the gap.