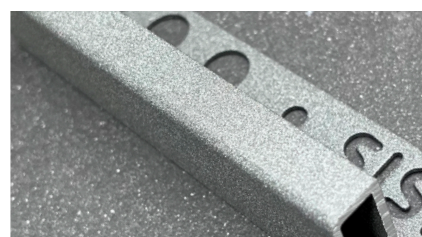
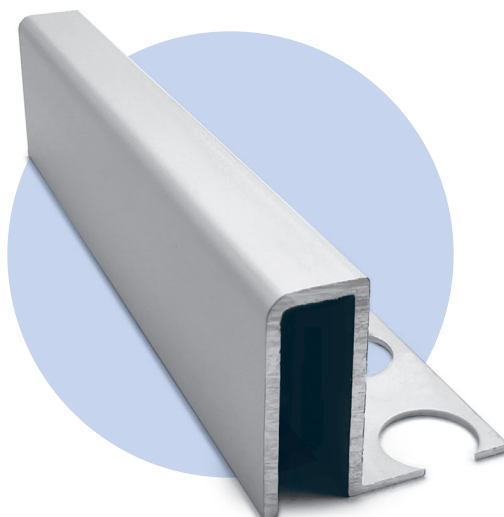
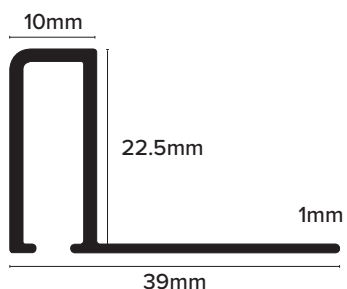


# TDP



## Product Description

For a bolder finish to your outdoor space the Aluminium Square Edge profiles offer a 10mm top face to show off the striking finishes alongside providing edge protection for your tiles or alternatively can be used as a feature strip.

We offer bespoke Powder Coating to match any colour you may need.

## Technical Details

TDP profiles are available in different anodised finishes and powder coated finishes - All natural Aluminium (Mill Finish) has a oxide film of approx 0.2 microns, when Mechanically & Chemically polished the anodising process increases this to 5 microns, up-to 20 for the Matt finish and 100 for powder coated.

**Aluminium AA 6063 T6 / UNS A96063 anodised to DIN 17611**

|     |          |
|-----|----------|
| Si% | 0.2-0.6  |
| Fe% | 0.35     |
| Cu% | 0.1      |
| Mn% | 0.1      |
| Mg% | 0.45-0.9 |
| Zn% | 0.1      |
| Cr% | <0.01    |
| Al  | Balance  |

## Maintenance

Genesis TDP does not require any special maintenance. Oxidisation film on Aluminium may be removed with a common polishing agent; however, they do reoccur.

Damaged anodised finishes may only be repaired by re-coating. Aluminium must be tested to verify its suitability if chemical stresses are anticipated. Cementitious materials, in conjunction with moisture, become alkaline.

Since aluminium is sensitive to alkaline substances, exposure to the alkali ( depending on the concentration and time of exposure) may result in corrosion (aluminium hydroxide formation). Therefore, it is important to remove adhesive or grout residue from visible surfaces.

In addition ensure that the profile is solidly embedded in the setting material and that all cavities are filled to prevent the collection of alkaline water. The anodised layer creates a finish that retains a uniform appearance during normal use. The surface, however, is susceptible to scratching and wear and may be damaged by tile adhesive, mortar, or grouting material.

Therefore, setting materials must be removed immediately. Otherwise, the description regarding Aluminium applies.

## Dimensions

Available in 2.5m lengths.

## Installation

1. Select TDP according to tile thickness.
2. Trowel tile adhesive over the area that forms the perimeter of the tiled covering.
3. Press the perforated anchoring leg of the profile into the tile adhesive and align, mechanical fix if required
4. Trowel additional adhesive over the perforated anchoring leg to ensure full coverage.
5. Solidly embed the tiles so that the tiled surface is flush with the top of the profile, the profile should not be higher than the tiled surface.
6. Fill the joint completely with grout.