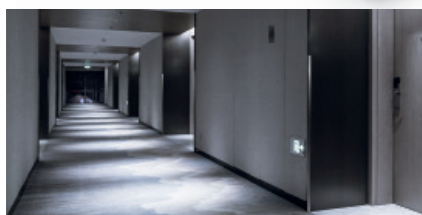
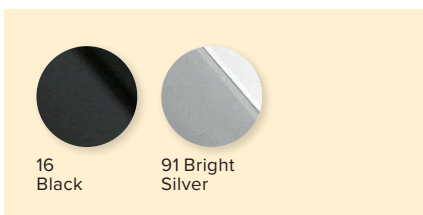
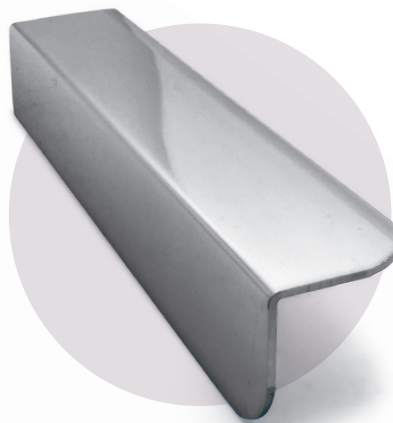
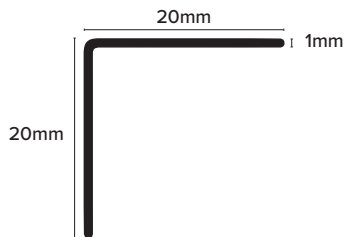


EAP



Product Description

The EAP profile can be used in a range of environments, creating beautiful spaces with its collection of finishes and self-adhesive fitting.

Suitable for retro fixing, the profile provides a decorative and clean finish whilst also offering the ability to cover existing damage to walls so that the wall covering doesn't have to be replaced.

Technical Details

Profiles are available in different anodised finishes and powder coated finishes - All natural Aluminium (Mill Finish) has a oxide film of approx. 0.2 microns, when mechanically and chemically polished the anodising process increases this to 5 microns, up-to 20 for the matt finish and 100 for powder coated.

Aluminium AA 6063 T6 / UNS A96063 anodised to DIN 17611	
Si%	0.2-0.6
Fe%	0.35
Cu%	0.1
Mn%	0.1
Mg%	0.45-0.9
Zn%	0.1
Cr%	<0.01
Al	Balance

Dimensions

Available in 1.5m lengths and widths / depths of 20mm.

Maintenance

Genesis EAP profiles do not require any special maintenance. Oxidation films on Aluminium may be removed with a common polishing agent; however, they do reoccur. Damaged anodised finishes may only be repaired by re-coating.

Aluminium must be tested to verify its suitability if chemical stresses are anticipated. Cementitious materials, in conjunction with moisture, become alkaline. Since aluminium is sensitive to alkaline substances, exposure to the alkali (depending on the concentration and time of exposure) may result in corrosion (aluminium hydroxide formation). Therefore, it is important to remove adhesive or grout residue from visible surfaces. In addition, ensure that the profile is solidly embedded in the setting material and that all cavities are filled to prevent the collection of alkaline water.

The anodised layer creates a finish that retains a uniform appearance during normal use. The surface, however, is susceptible to scratching and wear and may be damaged by tile adhesive, mortar, or grouting material. Therefore, setting materials must be removed immediately. Otherwise, the description regarding aluminium applies.

External Use

Bright and brushed finishes are not suitable for environments with direct UV exposure or where mechanical cleaning operations occur.

Installation

1. Ensure that the surface where the EAA profile is being applied is smooth, dry and free from any contaminants such as loose paint, dust and grease.
2. Apply a bead of proprietary cartridge adhesive to the back of both wings on the inside of the profile.
3. Carefully place the EAA profile into position and apply an even pressure over the entire surface of the profile until a satisfactory lie is achieved.
4. Once the adhesive has set, remove the protective film from the surface of the profile.

