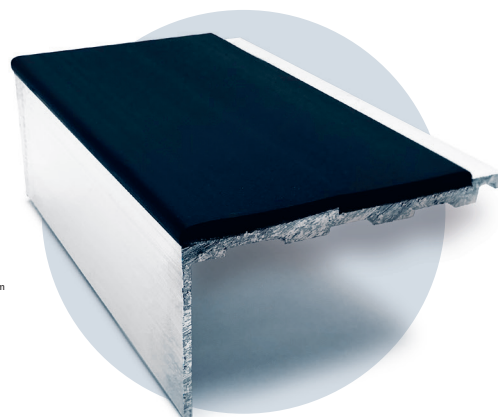
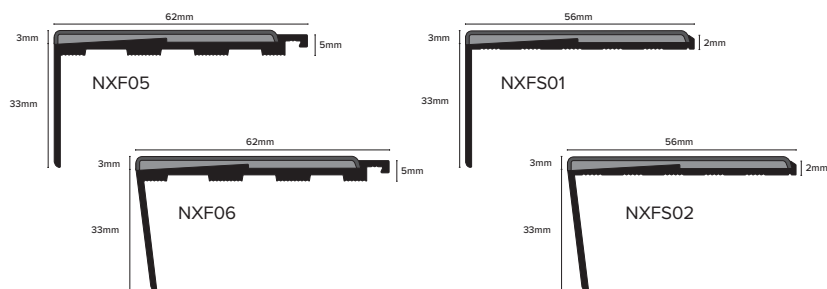


# NXF/S



## Channel

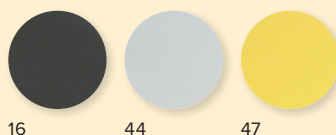


A16 Black

80 Mill

A86 Bright Brass

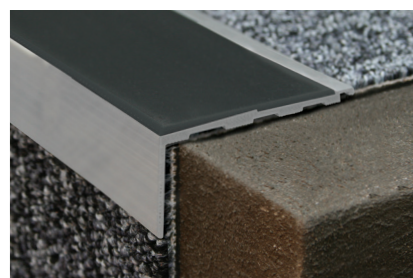
## Standard Insert



16 Black

44 Ice Grey

47 Yellow



## Product Description

The X-Range offers a unique mechanism to secure the insert in position while offering heightened exposure to the leading edge.

This increased foot contact to the slip-resistant insert reduces the risk of slips, trips and falls on stairs designed to meet the guidance in Approved Document M and BS8300-2:2018.

## Dimensions

Stock Lengths of 2.77m.

## Technical Details

Not recommended for use above 60°C, resistant to most oils, alcohols, petrol's and fats. It is unsuitable for use in contact with aromatic and chlorinated hydrocarbons, ketones, nitro-compounds, esters and cyclic esters will cause some swelling.

### Aluminium AA 6063 T6 / UNS A96063 anodised to DIN 17611

Si%	0.2-0.6
Fe%	0.35
Cu%	0.1
Mn%	0.1
Mg%	0.45-0.9
Zn%	0.1
Cr%	<0.01
Al	Balance

Aluminium Extrusion Standard (DIN) EN 755 1994/1997 ; Aluminium and aluminium alloys. Alloy: 6063 Temper: T5

## Maintenance

**Inserts:** All inserts should be cleaned using a neutral detergent and thoroughly rinsed with clean water.

**Aluminium Channel:** These can be polished using steel wool or cloth to maintain the appearance - under no circumstances should solvent cleaners be utilised in cleaning or maintaining Genesis Aluminium Products.

## Installation

1. Ensure the steps are dry, clean, free of debris, level and even.
2. If pre-drilled use the drill holes to mark steps for drilling location.
3. Drill and Plug the steps.
4. Apply suitable adhesive to the underside of the nosing and apply nosing to the step.
5. Screw down the step with the appropriate size screws.
6. Apply insert (if separate) or insert pip to cover the screw head.

\*Anodising - Maximum length 2.4m.  
Other finishes available on demand.  
Please note; limited anodising stock available - lead times may apply