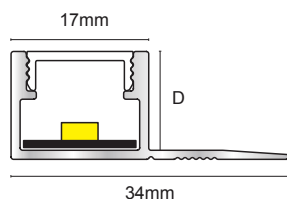


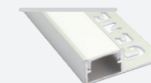
TLD

Product Datasheet 7.21



Vision - MultiFix

81 Matt Silver



Product Description

Genesis TLD is a decorative Aluminium profile designed for use with LED Lighting to create a feature in ceramic wall and floor tile installations.

Technical Details

The TLD profile is available in Matt Silver which has a oxide film of approx 20 for the via the anodising process.

TLD is provided with a Polycarbonate frosted diffuser to promote a continuous finished look to the LED lighting.

**Aluminium AA 6063 T6 / UNS A96063
anodised to DIN 17611**

Si%	0.2-0.6
Fe%	0.35
Cu%	0.1
Mn%	0.1
Mg%	0.45-0.9
Zn%	0.1
Ti%	0.1
Cr%	0.1
Al	Balance

Dimensions

Available in 2.8m lengths and 10mm and 12mm depths

LED Lighting options available - see www.genesis-gs.com/products/vision-1 for details

Maintenance

Genesis TLD does not require any special maintenance. Oxidation films on Aluminium may be removed with a common polishing agent; however, they do reoccur. Damaged anodised finishes may only be repaired by recoating.

Aluminium must be tested to verify its suitability if chemical stresses are anticipated.

Cementitious materials, in conjunction with moisture, become alkaline. Since aluminium is sensitive to alkaline substances, exposure to the alkali (depending on the concentration and time of exposure) may result in corrosion (aluminium hydroxide formation). Therefore, it is important to remove adhesive or grout residue from visible surfaces. In addition, ensure that the profile is solidly embedded in the setting material and that all cavities are filled to prevent the collection of alkaline water.

The anodised layer creates a finish that retains a uniform appearance during normal use. The surface, however, is susceptible to scratching and wear and may be damaged by tile adhesive, mortar, or grouting material. Therefore, setting materials must be removed immediately. Otherwise, the description regarding aluminium applies.

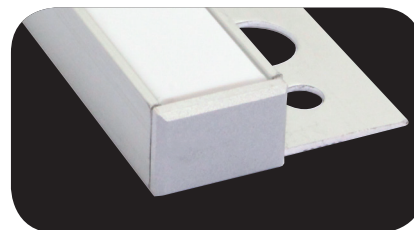
Installation

Before installing TLD, you should make sure you have planned out your wiring and power supply options, for Genesis LED's help is available online or from our customer service team, for profile installation only, please continue.

1. Select TLD according to tile thickness.
2. Trowel tile adhesive over the area that forms the perimeter of the tiled covering.
3. Press the perforated anchoring leg of the TLD into the tile adhesive and align, mechanical fix if required (wiring and lighting should be in situ before bedding into any adhesive)
4. Trowel additional adhesive over the perforated anchoring leg to ensure full coverage.
5. Solidly embed the tiles so that the tiled surface is flush with the top of the profile, the profile should not be higher than the tiled surface, but rather up to approximately 1 mm lower.
6. Fill the joint completely with grout.

Allied Products

TLD profiles have specially designed end caps TUC, to achieve a neat finish on visible ends.



+44 (0)1642 713000 info@genesis-gs.com
www.genesis-gs.com



Genesis
For the Perfect Finish