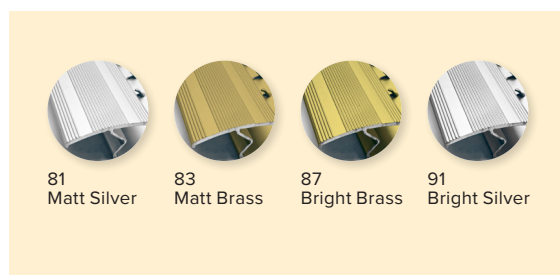
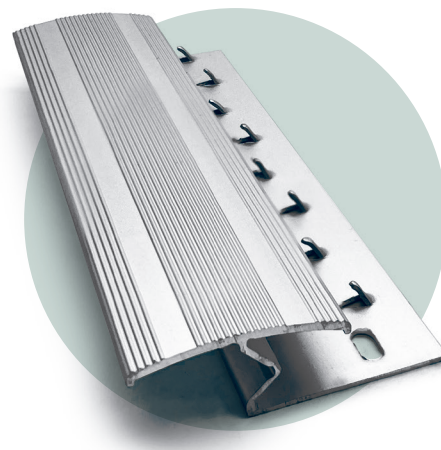
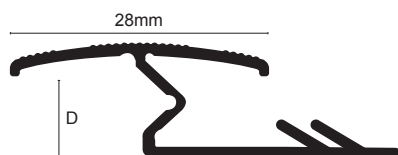


TGA



Product Description

The Aluminum Z-Bar Carpet Lock from Genesis provides an effective transition between different heights and types of floor finishes.

Simple to install the TGA profile provides a neat finish and protects the edges of both floorcoverings even when they slightly

Technical Details

Genesis Aluminium Profiles are available in different anodised finishes and powder coated finishes - All natural Aluminium (Mill Finish) has an oxide film of approx 0.2 microns, when Mechanically & Chemically polished the anodising process increases this to 5 microns, up-to 20 microns for the Matt finish and 100 for Powder coated.

Aluminium AA 6063 T6 / UNS A96063 anodised to DIN 17611

Si%	0.2-0.6
Fe%	0.35
Cu%	0.1
Mn%	0.1
Mg%	0.45-0.9
Zn%	0.1
Cr%	<0.01
Al	Balance

Maintenance

Genesis TGA profiles do not require any special maintenance. Oxidation films on Aluminium may be removed with a common polishing agent; however, they do reoccur.

Damaged anodised finishes may only be repaired by re-coating. Aluminium must be tested to verify its suitability if chemical stresses are anticipated.

Cementitious materials, in conjunction with moisture, become alkaline. Since aluminium is sensitive to alkaline substances, exposure to the alkali (depending on the concentration and time of exposure) may result in corrosion (aluminium hydroxide formation). Therefore, it is important to remove adhesive or grout residue from visible surfaces. In addition, ensure that the profile is solidly embedded in the setting material and that all cavities are filled to prevent the collection of alkaline water.

The anodised layer creates a finish that retains a uniform appearance during normal use. The surface, however, is susceptible to scratching and wear and may be damaged by tile adhesive, mortar, or grouting material.

Therefore, setting materials must be removed immediately. Otherwise, the description regarding aluminium applies.

Dimensions

Available in 28mm width and 9mm and 14mm depths and standard lengths of 0.9m and 2.8 m

Installation

1. Measure and cut profile to desired length.
2. Position profile against the hard flooring and secure mechanically using the fixing points in the flange
3. Drill and plug the substrate accordingly.
4. Fit hard flooring and compress the profile by hand or by using a Genesis rubber mallet code 901. To ensure the profile is compressed in a uniform manner please use a piece of wood and move along the profile accordingly.
5. To prevent any superficial damage to the profile please cover with a protective cloth or similar.