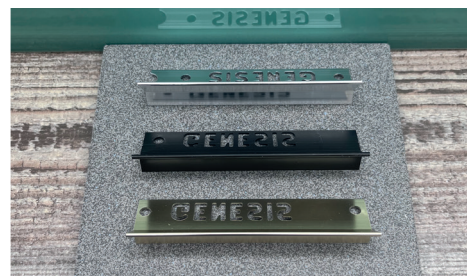
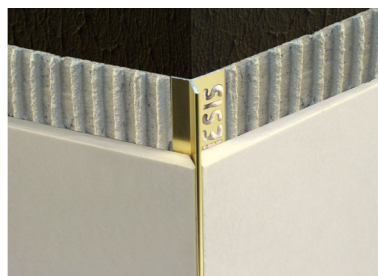
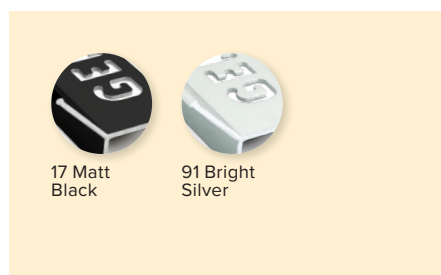
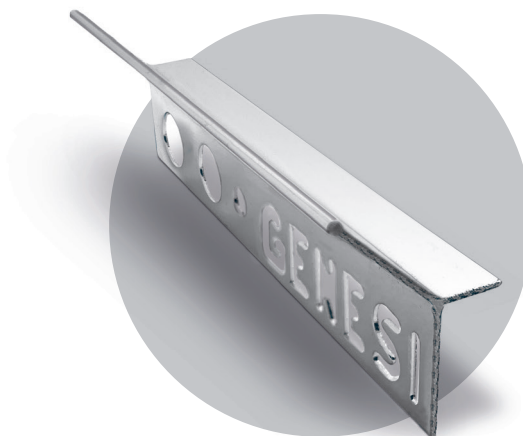
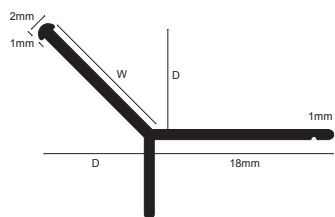


EAD



Product Description

EAD is an Aluminium profile for 90 degree external corners, with only a 2mm visible edge it offers a minimalistic design and discreet finishing outline, as well as protecting the edge of the tiles or mosaics.

Technical Details

Profiles are available in different anodised finishes and powder coated finishes - All natural Aluminium (Mill Finish) has a oxide film of approx. 0.2 microns, when mechanically and chemically polished the anodising process increases this to 5 microns, up-to 20 for the matt finish and 100 for powder coated.

Aluminium AA 6063 T6 / UNS A96063 anodised to DIN 17611

Si%	0.2-0.6
Fe%	0.35
Cu%	0.1
Mn%	0.1
Mg%	0.45-0.9
Zn%	0.1
Cr%	<0.01
Al	Balance

Maintenance

Genesis EAD profiles do not require any special maintenance. Oxidation films on Aluminium may be removed with a common polishing agent; however, they do reoccur. Damaged anodised finishes may only be repaired by re-coating.

Aluminium must be tested to verify its suitability if chemical stresses are anticipated. Cementitious materials, in conjunction with moisture, become alkaline. Since aluminium is sensitive to alkaline substances, exposure to the alkali (depending on the concentration and time of exposure) may result in corrosion (aluminium hydroxide formation). Therefore, it is important to remove adhesive or grout residue from visible surfaces. In addition, ensure that the profile is solidly embedded in the setting material and that all cavities are filled to prevent the collection of alkaline water.

The anodised layer creates a finish that retains a uniform appearance during normal use. The surface, however, is susceptible to scratching and wear and may be damaged by tile adhesive, mortar, or grouting material. Therefore, setting materials must be removed immediately. Otherwise, the description regarding aluminium applies.

External Use

Bright and brushed finishes are not suitable for environments with direct UV exposure or where mechanical cleaning operations occur.

Dimensions

Available in 2.5m lengths and come in depths of 10mm and 12mm.

Installation

1. Select EAD according to tile thickness.
2. Trowel tile adhesive over the area that forms the perimeter of the tiled covering.
3. Press the perforated anchoring leg of the EAD into the tile adhesive and align, mechanical fix if required.
4. Trowel additional adhesive over the perforated anchoring leg to ensure full coverage.
5. Fill the joint completely with grout.
6. The EAD profile is designed to protrude slightly to provide protection against damage to the edge of the tiles.