

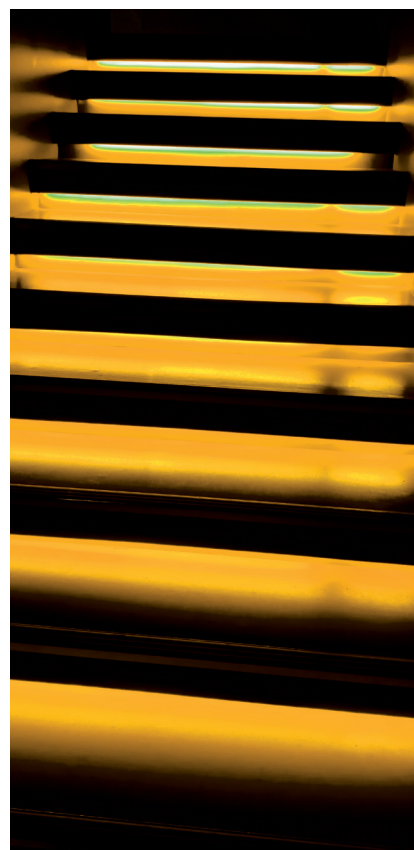
Vision offers a range of premium profiles for commercial and domestic applications, designed to protect and inspire with variable mood accents.

The range is specifically designed to accept universal LED systems and RGB for Steps, Listello, Edges and Skirting offering unlimited freedom of design.

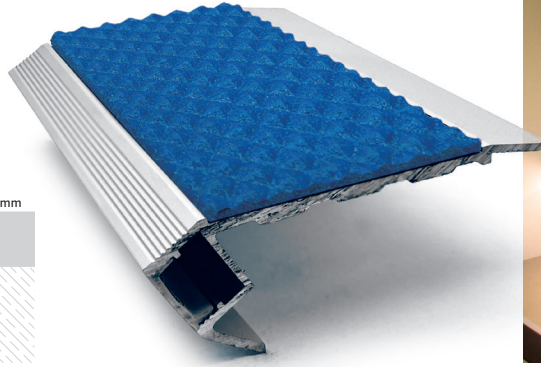
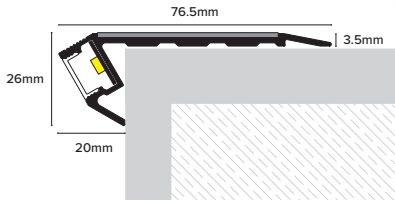
Developed with simplicity in mind, the range of supporting hardware offers the most frequently installed systems with Polycarbonate Diffusers that eliminate the hotspots.

- 8\*, 30, 50, 100 & 180 W  
12V Standard & Uni Drivers
- Durable aluminium carriers
- Efficient LED 4.8W or 9.6W per metre
- Cutting Intervals
  - 25mm (single white)
  - 13mm (multi white)
  - 11mm (RGB)
- LEDs per metre
  - 480 (single white)
  - 608 (multi white)
  - 810 (RGB)
- Average lifespan 40,000 Hours
- Simple installation and selection
- IP65 Certified LED and RGB
- UL approved diffusers
- Enhanced safety
- Manufactured to A-A++ energy rating
- Remote control and Smart Home options available
- 3M VHB adhesive backing

\*Standard only

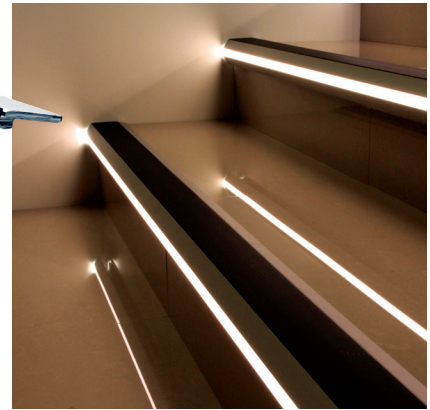
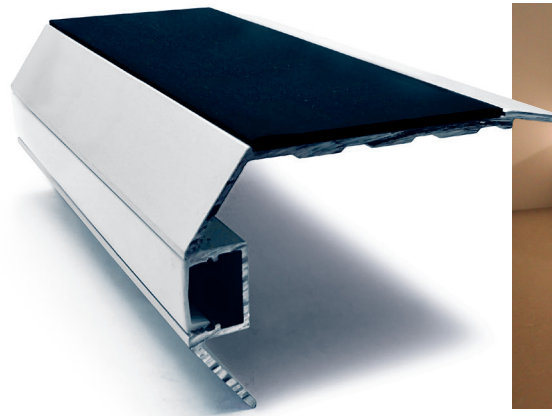
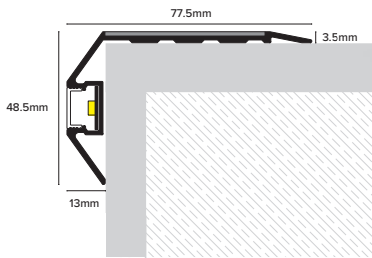


**NALR** Light Down



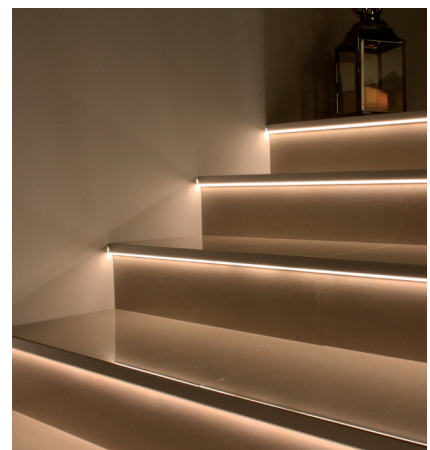
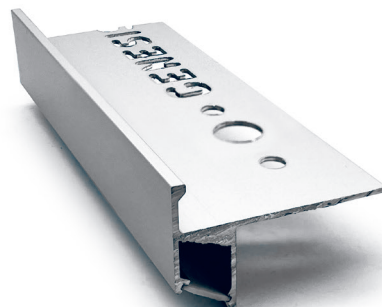
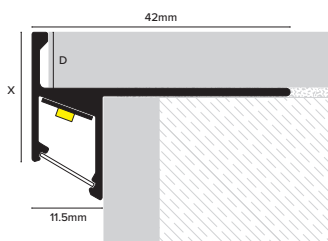
Commercial style stair nosing incorporating a range of non-slip PVC based inserts and Vision LED, CCT and RGB lighting systems in a 'light down' configuration. Complete with frosted polycarbonate diffuser to ensure optimum light dispersion. Supplied in anodised Matt Silver finish, other finishes are available on request. Standard and Tredsafe insert options.

**NSLR** Light Out



Commercial style stair nosing incorporating a range of non-slip PVC based inserts and Vision LED, CCT and RGB lighting systems in a 'light out' configuration. Complete with frosted polycarbonate diffuser to ensure optimum light dispersion. Supplied in anodised Matt Silver finish, other finishes are available on request. Standard and Tredsafe insert options.

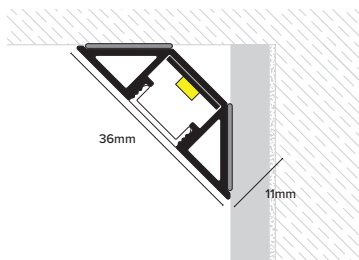
**NLD** Step



NLD is a tile-in step edge incorporating Vision LED, CCT and RGB lighting systems. Designed to emphasise and accentuate each individual stair, illuminating the riser below to create a stunning stair case. Supplied in anodised Matt Silver finish with frosted polycarbonate diffuser for optimum light dispersion.

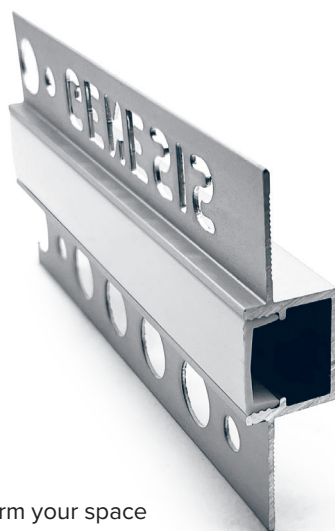
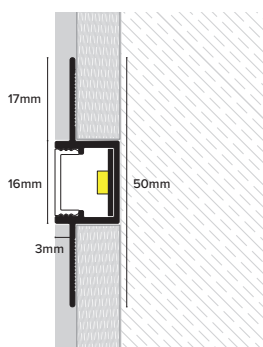
For full product details see the specific profile datasheet

**TRV Retro Self Adhesive**



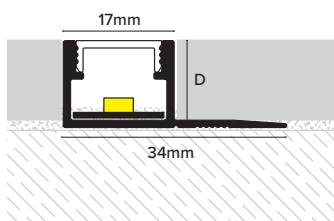
A versatile profile designed for internal corner installations for downlighting or vertical fitting used in conjunction with Vision LED, CCT and RGB lighting systems. Supplied with frosted polycarbonate diffuser for optimum light dispersion and self-adhesive for easy installation. Rated IP64 under IEC standard 60529 - resistant to water splashes from any direction.

**TPD 3mm Plaster Profile**



This plaster profile allows for you to transform your space effortlessly with a straight forward installation. Simply secure to aluminium flange to plasterboard and skim over.

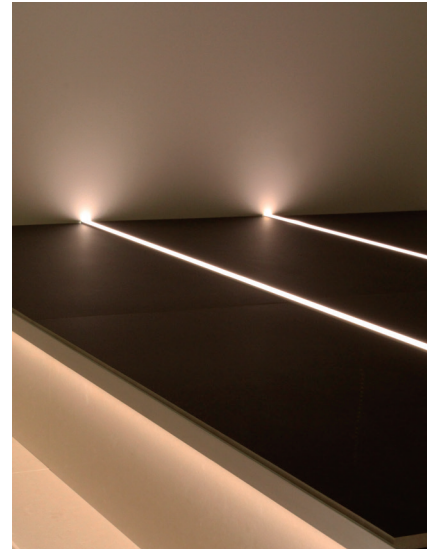
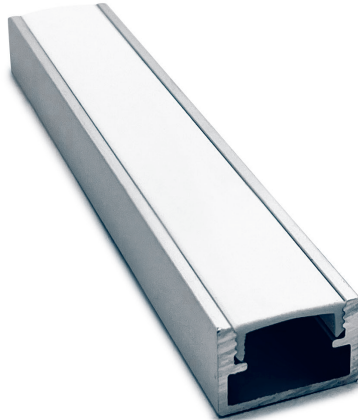
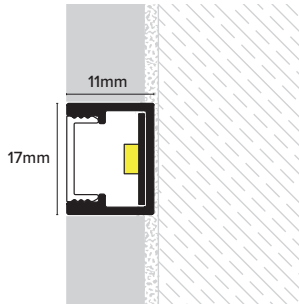
**TLD MultiFix**



Tile-in profiles incorporating Vision LED, CCT and RGB lighting systems. Can be used in wall or floor installations to break up large expanses of tile or create a pathway in the flooring surface. Supplied in anodised Matt Silver finish with frosted polycarbonate diffuser for optimum light dispersion.

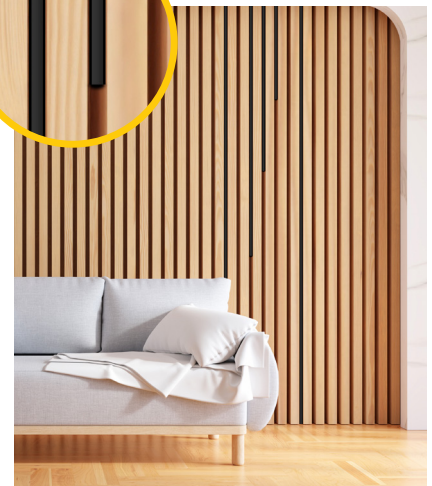
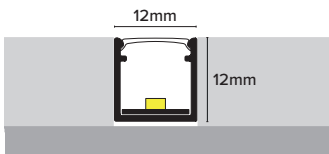
For full product details see the specific profile datasheet

**TUD** Vision - Guidance System

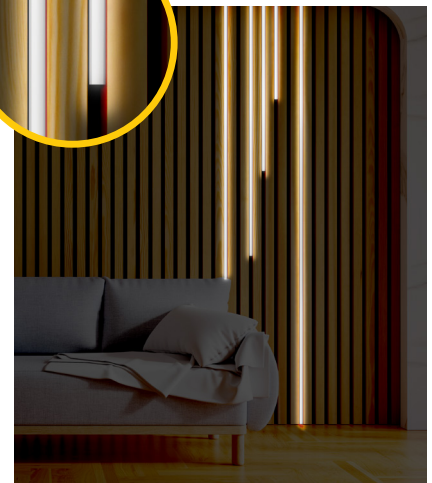
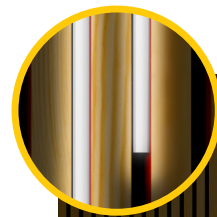


Tile-in profiles incorporating Vision LED, CCT and RGB lighting systems. Can be used in wall or floor installations to break up large expanses of tile or create a pathway in the flooring surface. Supplied in anodised Matt Silver finish with frosted polycarbonate diffuser for optimum light dispersion.

**AIV** Panel Inlay

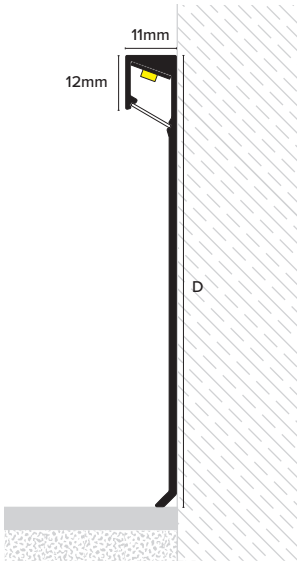


The Stainless Steel Inlay is a 12mm wide product designed to slot effortlessly between the slats of your Acoustic Wall Panels, giving you ultimate creative freedom and customisation allowing you to achieve the look you desire.



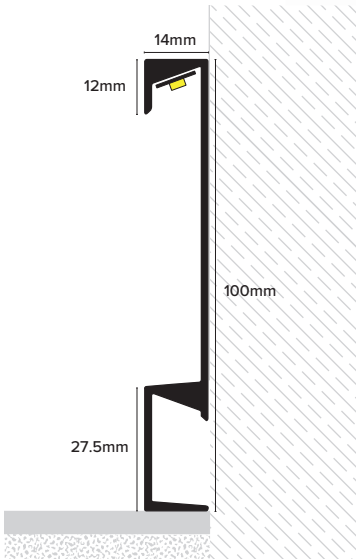
For full product details see the specific profile datasheet

### KLD Vision - Skirting



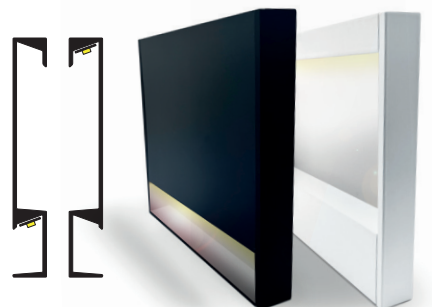
A retrofit aluminium skirting profile incorporating Vision LED, CCT and RGB lighting systems. Designed to create a border of low-level light which encapsulates the room.

### KRD Vision - Universal LED Skirting



A retrofit aluminium skirting profile incorporating Vision LED, CCT and RGB lighting systems. Designed to create a border of low-level light which encapsulates the room. Dual configurations so you can easily achieve your desired look.

#### Dual Configurations



For full product details see the specific profile datasheet

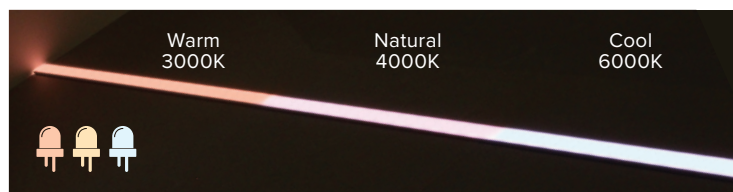
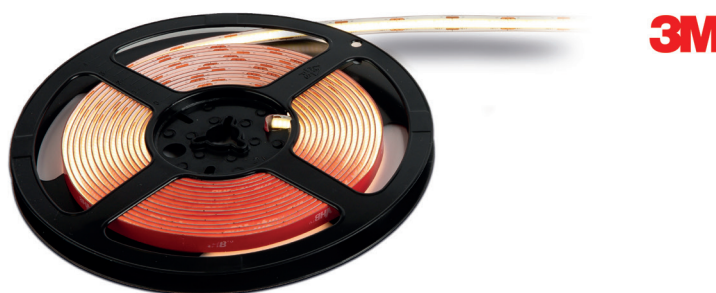
## LED System (Single White & Multi White)

Vision offers a range of premium profiles for commercial and domestic applications, designed to protect and inspire with variable mood accents.

The range is specifically designed to accept universal LED systems and RGB for steps, listello, edges and skirting offering unlimited freedom of design.

Developed with simplicity in mind the range of supporting hardware offers the most frequently installed systems with polycarbonate diffusers that eliminate hotspots.

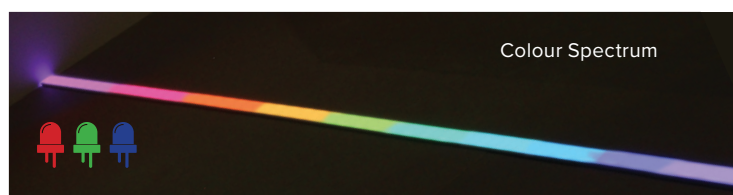
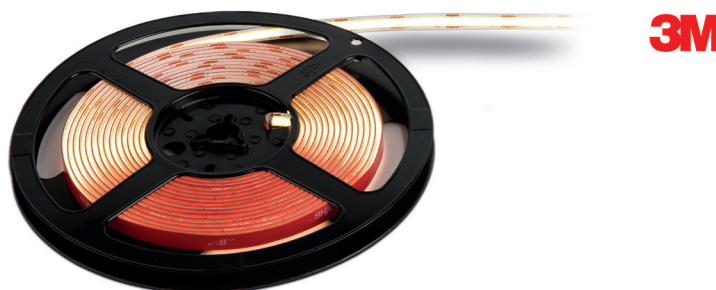
- Efficient 4.8W and 9.6W power options, manufactured to A-A++ energy ratings
- Average lifespan 40,000 hours
- IP65 certified protection
- Cutting Intervals
  - 25mm (single white)
  - 13mm (multi white)
- LEDs per metre
  - 480 (single white)
  - 608 (multi white)
- Simple installation
- Single zone
- 2m power cable



## RGB System

This dynamic system offers a range of mood lighting which allows the user to change colours and dim brightness by remote control in a maximum of 4 zones.

- 15W power
- IP65 certified protection
- 11mm Cutting Intervals
- 810 LEDs per metre
- Remote and Wi-Fi control available
- Can produce any colour combination of red, green, blue light
- Also offers three colour temperatures of white light – Cool, Natural and Warm
- Multi-zone
- 2m power cable



## Safety

All LEDs, drivers and components are CE marked and tested to the following EN standards:

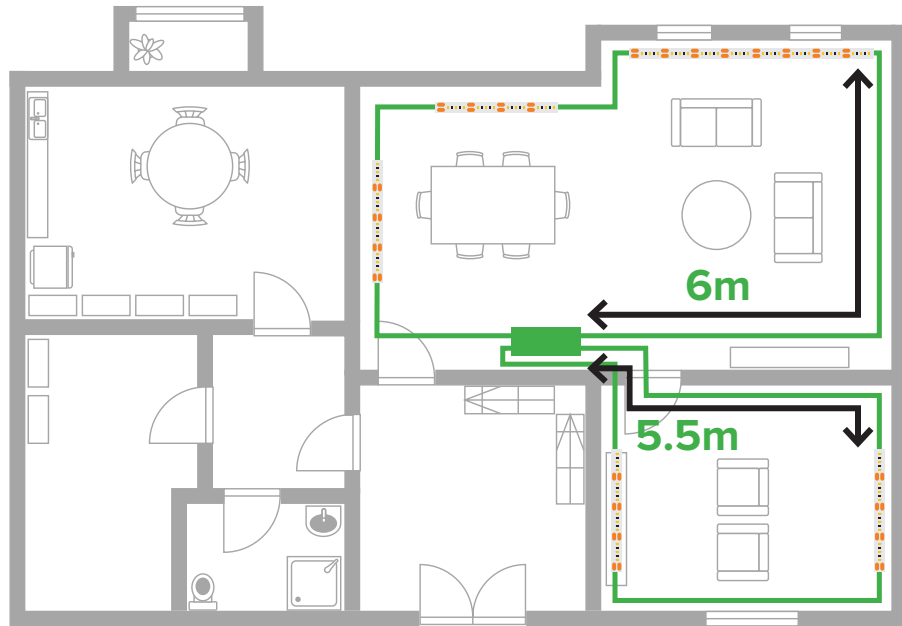
- EN 55015:2013 • EN 61547:2009 • EN 61000-3-2:2014 • EN 61000-3-3:2013

**Total Power (W) = Length of LED x Power Rating of LED (W)**

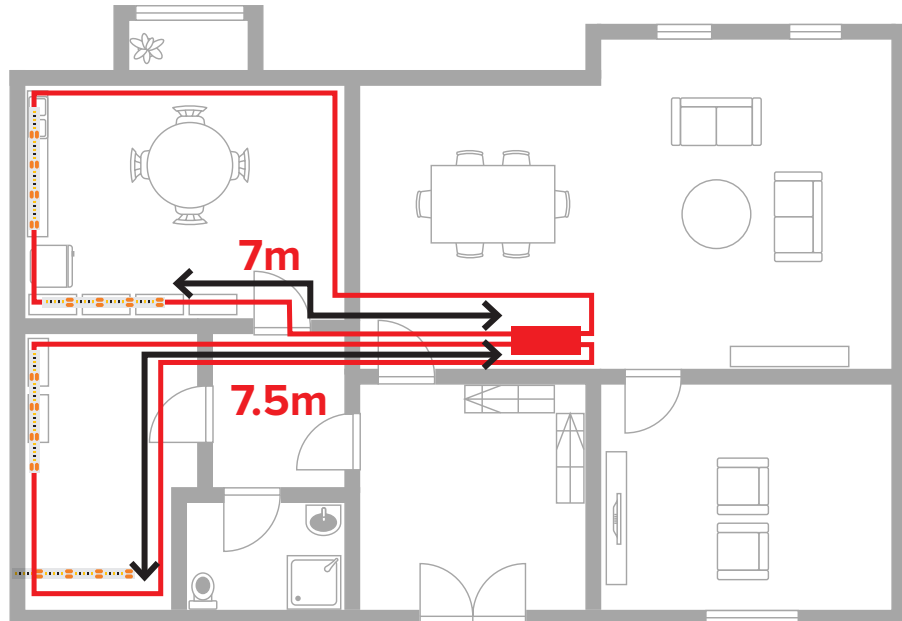


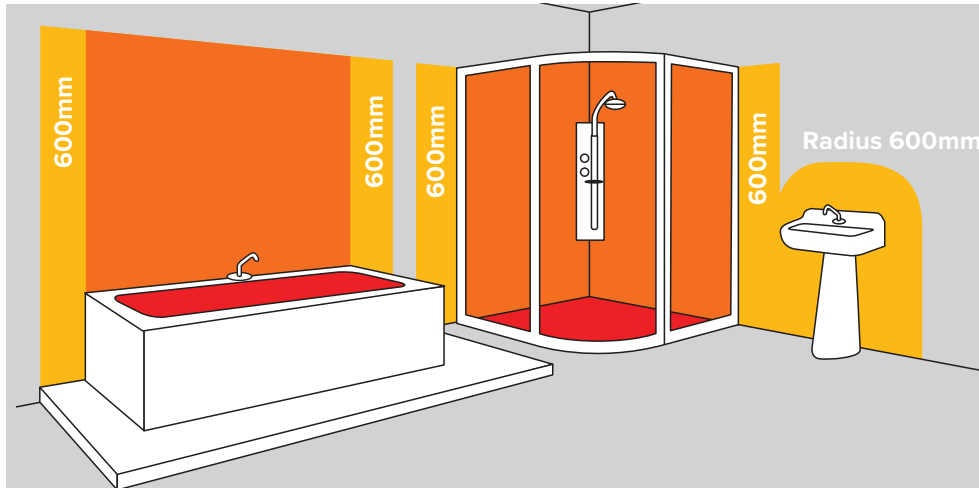
**Example: 9.6w x 2m = 19.2w**  
**Suggested Driver = 30w**

**< 6m ✓**



**> 6m ✗**





Zone 0

Zone 1

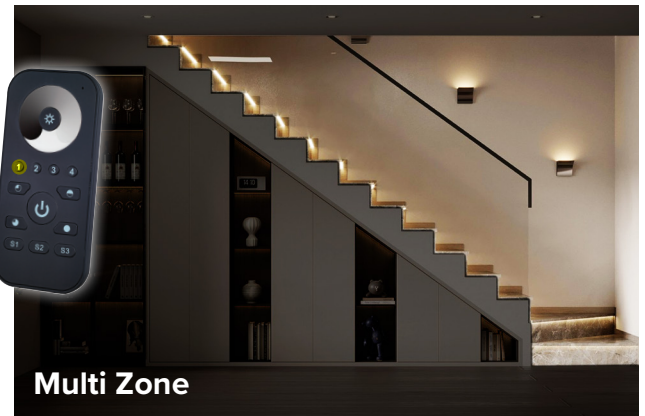
Zone 2

Zone 0 is IP67 and above  
Zone 1 is IP64 plus  
Zone 2 is IP64 plus

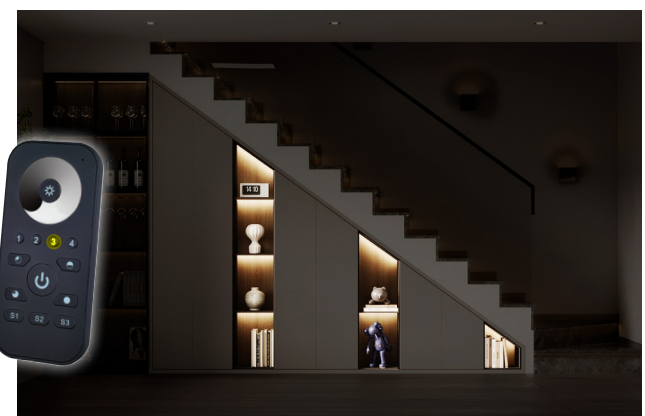
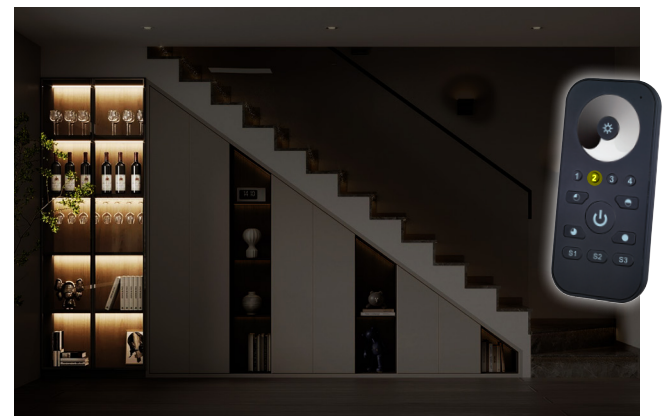
The tape should be at least 60cm from water source due to the wires / leads.



Single Zone



Multi Zone

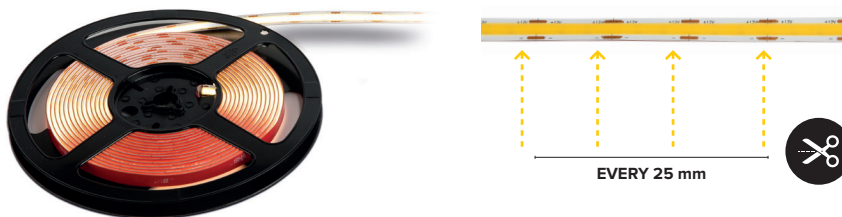




- 12 V 
- 2m 
- COB 

Natural White 4000K & Warm White 3000K

With an increased 480 LED's per metre (4 times its predecessor), 4.8W (Ambient) and 9.6W (Task) lighting options, the safety and security of 12V IP65 protection class as standard, plus 3M VHB pressure sensitive adhesive tape backing, this premium range of tapes is built to last, with a lifetime of around 40,000 hours.





LED Drivers

Selecting the right driver is easy – use the below formula to find the best option for your installation:

**Total Power (W) = Length of LED x Power Rating of LED (W)**



- 12 V 
- 1m 

**Drivers have six ports, use LEDCON to add additional ports (1 x LEDCON = 9 ports, 2 x LEDCON = 12 ports)**  
**For example:**  
 5 metres of Vision 9.6W LED tape uses a total of 48W. This installation will need to use a driver with a rating of at least 50W. The perfect option would be our 50W LED driver LDD50.

LED Extension



2m 

Additional Connector Block



Ports 

Butt COB Strip Connector

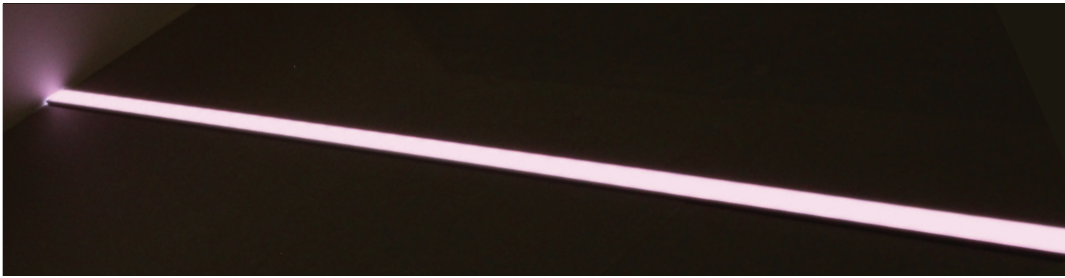





Link Leads



PIR Motion Detector





- 12 V 
- 2m 
- COB 

Natural White 4000K & Warm White 3000K

With an increased 480 LED's per metre (4 times its predecessor), 4.8W (Ambient) and 9.6W (Task) lighting options, the safety and security of 12V IP65 protection class as standard, plus 3M VHB pressure sensitive adhesive tape backing, this premium range of tapes is built to last, with a lifetime of around 40,000 hours.





LED Uni Drivers

Selecting the right driver is easy – use the below formula to find the best option for your installation:

**Total Power (W) = Length of LED x Power Rating of LED (W)**



- 12 V 
- 1m 

**Drivers have six ports, use LEDCON to add additional ports (1 x LEDCON = 9 ports, 2 x LEDCON = 12 ports)**  
**For example:**  
 5 metres of Vision 9.6W LED tape uses a total of 48W. This installation will need to use a driver with a rating of at least 50W. The perfect option would be our 50W LED driver LDD50.



### Single Zone Control

Vision compatible single zone remote control handset with dimmer, all you need is a driver (LUNDR).



Ports **4**

### Multi Zone or Smart Control

1 x driver and 1 x receiver required per independent zone.

Receiver is operated with either the remote (LEDREM) or your smart device



Ports **6**

Voice Control

Smart Control



30m Range

#### LED Extension



2m

#### Butt COB Strip Connector



8mm

#### Link Leads



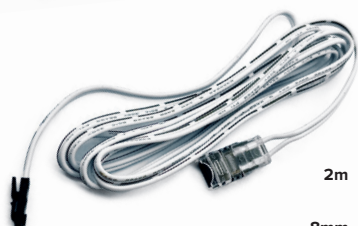
50mm

8mm

#### Additional Connector Block

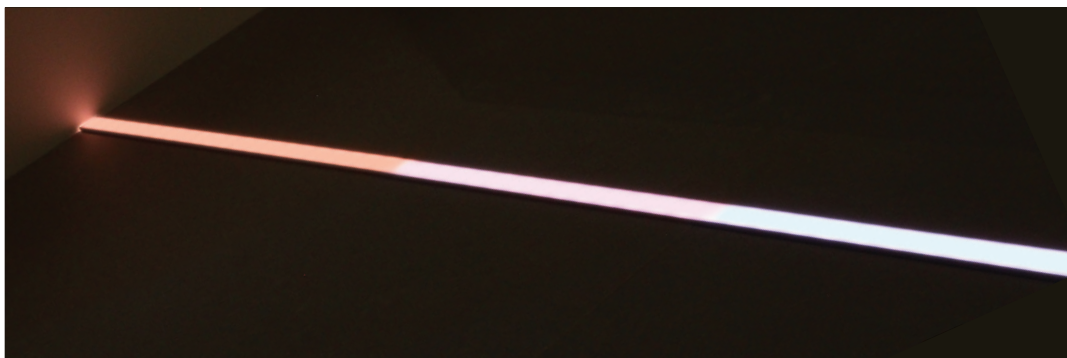






Ports **4**



2m

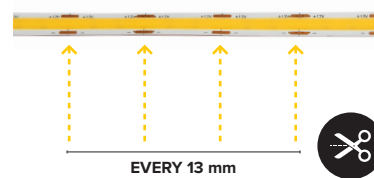
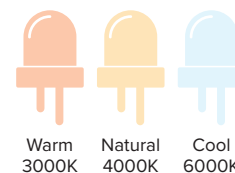
8mm



- 12 V 
- 9.6 W 
- 2m 
- COB 

### Multiple White

With an increased 608 LED's per metre (over 5 times its predecessor), 9.6W (Task) lighting, the safety and security of 12V IP65 protection class as standard, plus 3M VHB pressure sensitive adhesive tape backing, this premium range of tapes is built to last, with a lifetime of around 40,000 hours.



### CCT Uni Drivers

Selecting the right driver is easy – use the below formula to find the best option for your installation:

**Total Power (W) = Length of LED x Power Rating of LED (W)**



- 12 V 
- 1m 



### Single Zone Control

Vision is compatible with single and multi-zone remote control, all you need is a receiver and remote control handset.



Ports **4**

### Multi Zone or Smart Control

1 x driver and 1 x receiver required per independent zone.

**Receiver is operated with either the remote (LCTREM) or your smart device**



Ports **4**

Voice Control

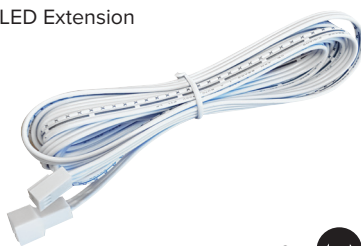
Smart Control



30m Range

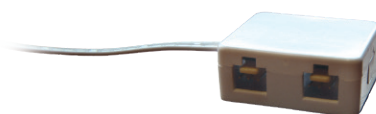
**CCT receivers have four ports, there is the capacity for 1 x LCTCON to be added to a receiver, resulting in a total of max 8 ports available.**

LED Extension

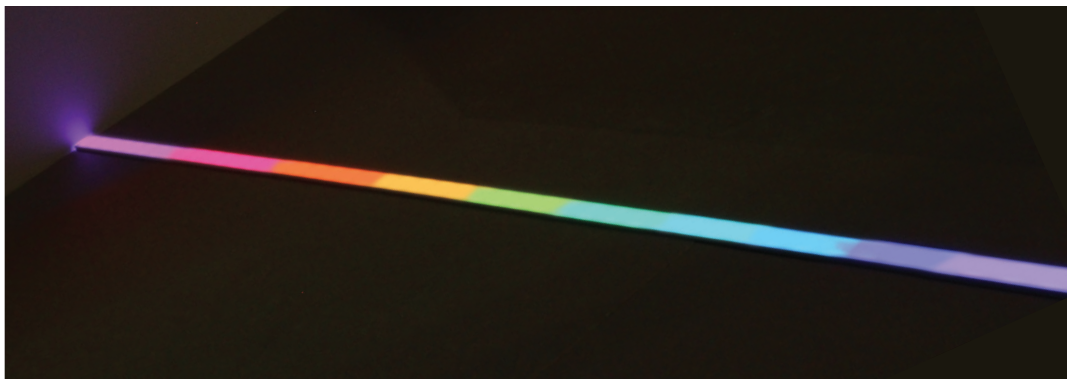


2m

Additional Connector Block



Ports **4**



12 V 

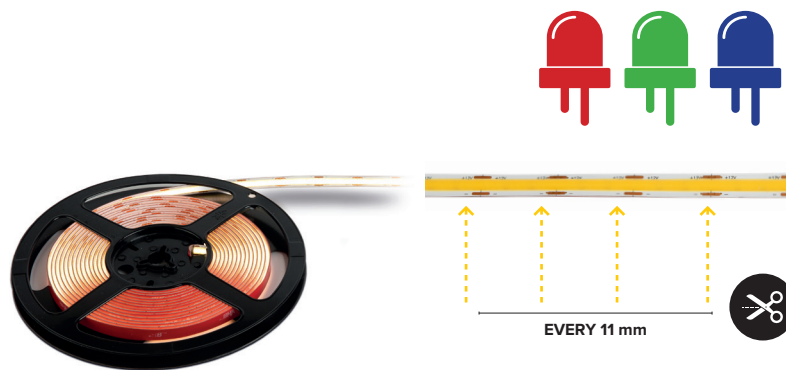
15 W 

2m 

COB 

### RGB Colour Spectrum

With an increased 810 LED's per metre (over 5 times its predecessor), 9.6W (Task) lighting, the safety and security of 12V IP65 protection class as standard, plus 3M VHB pressure sensitive adhesive tape backing, this premium range of tapes is built to last, with a lifetime of around 40,000 hours.



### RGB Uni Drivers

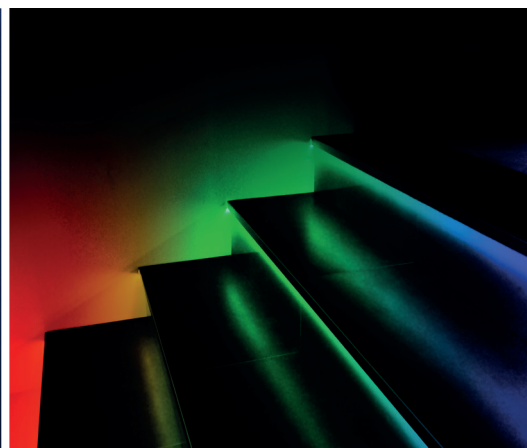
Selecting the right driver is easy – use the below formula to find the best option for your installation:

**Total Power (W) = Length of LED x Power Rating of LED (W)**



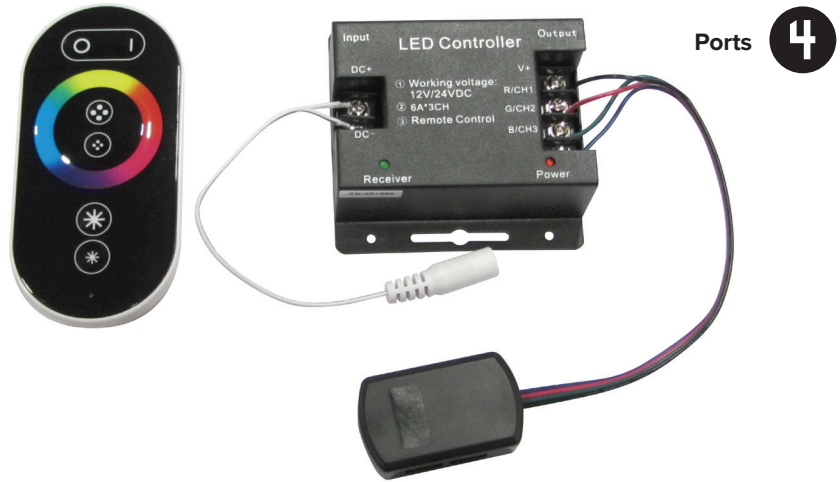
12 V 

1m 



### Single Zone Control

Vision is compatible with single and multi-zone remote control, all you need is a receiver and remote control handset.



Ports **4**

### Multi Zone or Smart Control

1 x driver and 1 x receiver required per independent zone.

Receiver is operated with either the remote (LGBREM) or your smart device



Ports **4**

Voice Control

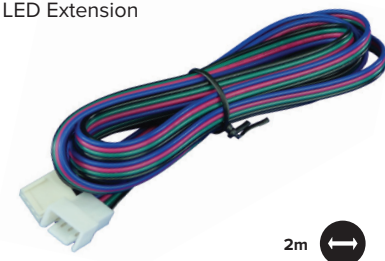
Smart Control



30m Range

RGB receivers have four ports, there is the capacity for 1 x LGBCON to be added to a receiver, resulting in a total of max 8 ports available.

LED Extension



2m

Additional Connector Block



Ports **4**

Choose between Vision LED and RGB options to find the right illumination for your project.

3 simple steps will help you know what you need...

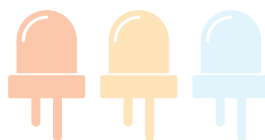
### 1. Choose your lighting system



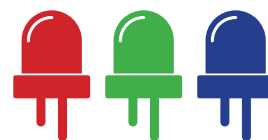
**Natural White**  
(no remote control)



**Natural White**



**White Moods**  
Warm / Natural / Cool



**RGB**

### 2. Select the driver



**12V Drivers**  
(LDD)



**LED Uni Drivers**  
(LUNDR)

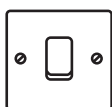


**CCT Uni Drivers**  
(LUNDR)



**RGB Uni Drivers**  
(LUNDR)

### 3. Control options



**Wall Switch**



**Single Zone**  
(LEDRAD)



**Single Zone**  
(LCTRAD)



**Single Zone**  
(LGBRAD)



**Motion Sensor**



**Multi Zone or Smart**  
(LED..)



**Multi Zone or Smart**  
(LCT..)



**Multi Zone or Smart**  
(LGB..)

**Q: What does LED stand for?**

A: LED stands for Light Emitting Diode.

**Q: What is an IP rating?**

A: IP ratings are an indication of an electrical product's protection against solid objects such as dust and dirt and moisture. IP stands for ingress protection. The IP rating consists of two digits, the first number refers to the product's protection against solids, the second refers to its protection against liquids.

**Q: What is RGB?**

A: RGB simply stands for 'red, green and blue'. An RGB LED product has the ability to combine these three colours to produce over 16 million hues of coloured light.

**Q: Can I cut the LED / RGB strip at any point?**

A: The tapes can be cut at the intervals indicated by the copper strips which are quoted on the product pages.

**Q: Do you offer a bespoke service and if so what do I need to provide?**

A: Yes we do, just send details of the installation area, quantity of LED required and the effect you are trying to achieve.

**Q: Do you offer alternative voltages?**

A: Yes, our standard drivers work on an input voltage of 200-240v but we can supply 110v rated drivers if required.

**Q: What is the life span of LED?**

A: Our LED strips have an average lifespan of 40,000 hours

**Q: Can I replace my LED lights?**

A: The LEDs have a lifetime of around 40,000 hours. Under normal operating conditions, replacement will not be necessary but is possible if required. Should you need to replace your LED lights we recommend you consult a qualified electrician to perform the modification.

**Q: Do I require an Electrician to complete the installation?**

A: Yes, Wiring is against the law in the UK unless you are a qualified electrician.

**Q: What is the specification of the wiring used in your LED system?**

A: The wiring is 2192Y 0.75mm.

**Q: Can I wire the lights to a standard light switch or dimmer switch?**

A: Yes, we recommend you consult a qualified electrician to assist with the installation.

**Q: Can I add more zones of LED at a later date?**

A: Yes, providing you are using a system which is compatible with multi-zone installation (eg. RGB), you can add or amend lighting zones using the remote control handset.

**Q: Can I use my own LED system with the Genesis profiles?**

A: Yes, but we recommend you follow our specification to achieve the optimal results.

**Q: I have a single staircase with 20 steps @1m of CCT, each driver can only accept 4 LED's due to the number of micro ports so I will need 5 drivers. The catalogue states that it is one receiver per driver but I want this staircase to be all ZONE 1, Can you have 5 receivers all programmed to 1 zone?**

A: Yes, it is one receiver per driver but up to eight receivers can be programmed to the same zone on the same remote as long as you use the multi-zone remote and receivers.

**Q: Is a dedicated power lead required for each driver?**

A: No, multiple drivers can be wired to a single power lead if required, a qualified electrician will be able to advise further.

**Q: Is it possible to increase the number of connect ports supplied with each driver?**

A: Yes, we offer Connector Block Extensions which provide an additional four ports if required, however, there is a maximum number of extensions that can be added, as quoted on the product pages. The power limit of the driver is not affected by this adaptation, so wattage restrictions must still be observed.

**Q: What is the length of the power cable on the products?**

A: There is 1 metre of power cabling on all drivers (Standard LED, Uni, and 110V), 2 metre of power cabling on all tape (LED, CCT, RGB and COB), and 3 metre of power cabling on the EyeLEDs