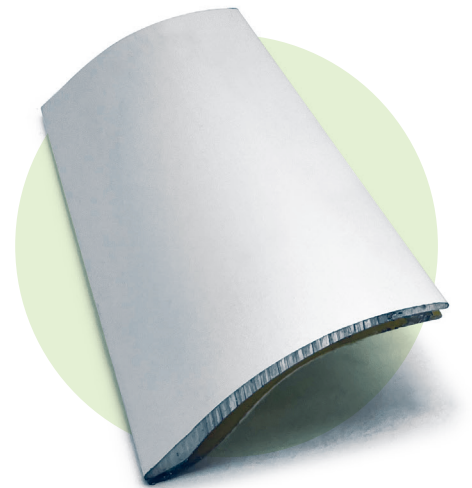
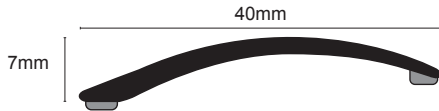


# TVS



## Product Description

Genesis TVS is an aluminium profile designed to provide a neat, clean transition from two floor coverings of different heights. It also provides an excellent cover where an expansion gap has been left or is desired between two different floor coverings. Simple to install the TVS provides a perfect safe secure finish to the flooring installation.

## Technical Details

Genesis Aluminium Profiles are available in different anodised finishes and powder coated finishes - All natural Aluminium (Mill Finish) has an oxide film of approx 0.2 microns, when Mechanically & Chemically polished the anodising process increases this to 5 microns, up-to 20 microns for the Matt finish and 100 for Powder coated.

Aluminium AA 6063 T6 / UNS A96063 anodised to DIN 17611	
Si%	0.2-0.6
Fe%	0.35
Cu%	0.1
Mn%	0.1
Mg%	0.45-0.9
Zn%	0.1
Ti%	0.1
Cr%	0.1
Al	Balance

## Maintenance

Genesis TVS profiles do not require any special maintenance. Oxidation films on Aluminium may be removed with a common polishing agent; however, they do reoccur.

Damaged anodised finishes may only be repaired by re-coating. Aluminium must be tested to verify its suitability if chemical stresses are anticipated.

Cementitious materials, in conjunction with moisture, become alkaline. Since aluminium is sensitive to alkaline substances, exposure to the alkali (depending on the concentration and time of exposure) may result in corrosion (aluminium hydroxide formation). Therefore, it is important to remove adhesive or grout residue from visible surfaces. In addition, ensure that the profile is solidly embedded in the setting material and that all cavities are filled to prevent the collection of alkaline water.

The anodised layer creates a finish that retains a uniform appearance during normal use. The surface, however, is susceptible to scratching and wear and may be damaged by tile adhesive, mortar, or grouting material.

Therefore, setting materials must be removed immediately. Otherwise, the description regarding aluminium applies.

## Dimensions

Available in 0.9m and 2.7m lengths.  
Max. fixing depth 15mm

## Installation

1. Clean surface thoroughly ensuring removal of any contamination that may prevent the adhesion tape. **NB it is important to remember that the safety strip will only stick to surfaces that are smooth and free from dirt and grease.**
2. Cut to length, remove release paper from self-adhesive strip.
3. Place the profile into position, apply pressure along the full length to ensure adhesion. Do not attempt to re-position once the initial adhesion has taken place.