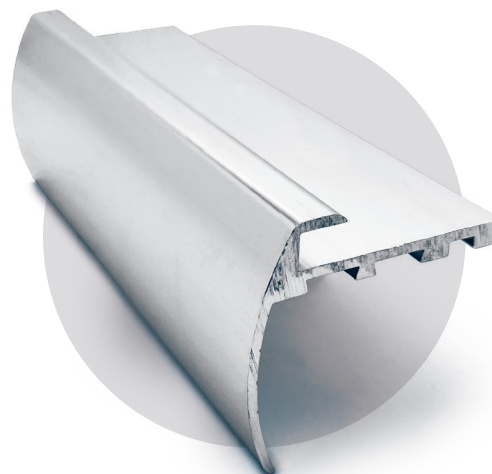
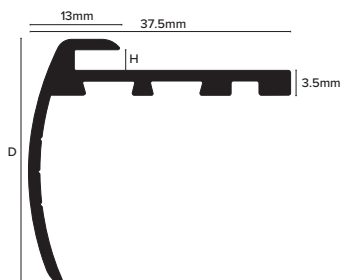


TVB



Product Description

This robust Aluminium step edge accommodates LVT of 3 or 5mm deep and designed to professionally finish the edge of steps fitted with LVT (or similar) with a curved front edge. Suitable for Light - Medium - Heavy foot traffic in Commercial (Retail, Hospitality, education etc) and Domestic buildings. Supplied individually packed, drilled and countersunk with Screws and Dowels.

Technical Details

Profiles are available in different anodised finishes and powder coated finishes - All natural Aluminium (Mill Finish) has a oxide film of approx. 0.2 microns, when mechanically and chemically polished the anodising process increases this to 5 microns, up-to 20 for the matt finish and 100 for powder coated.

Aluminium AA 6063 T6 / UNS A96063 anodised to DIN 17611

Si%	0.2-0.6
Fe%	0.35
Cu%	0.1
Mn%	0.1
Mg%	0.45-0.9
Zn%	0.1
Ti%	0.1
Cr%	0.1
Al	Balance

Maintenance

Genesis TVB does not require any special maintenance. Oxidation films on Aluminium may be removed with a common polishing agent; however, they do reoccur. Damaged anodised finishes may only be repaired by re-coating.

Aluminium must be tested to verify its suitability if chemical stresses are anticipated.

Cementitious materials, in conjunction with moisture, become alkaline. Since aluminium is sensitive to alkaline substances, exposure to the alkali (depending on the concentration and time of exposure) may result in corrosion (aluminium hydroxide formation). Therefore, it is important to remove adhesive or grout residue from visible surfaces. In addition, ensure that the profile is solidly embedded in the setting material and that all cavities are filled to prevent the collection of alkaline water.

The anodised layer creates a finish that retains a uniform appearance during normal use. The surface, however, is susceptible to scratching and wear and may be damaged by tile adhesive, mortar, or grouting material. Therefore, setting materials must be removed immediately. Otherwise, the description regarding aluminium applies.

Dimensions

Available in lengths of 2.7m and 3 and 5mm heights.

Installation

1. Clean surface thoroughly ensuring removal of any contamination that may prevent the installation.
2. Measure and cut profile to desired length.
3. Position the profile and mark the points to be drilled.
4. Reposition profile and mechanically secure using supplied fixings.