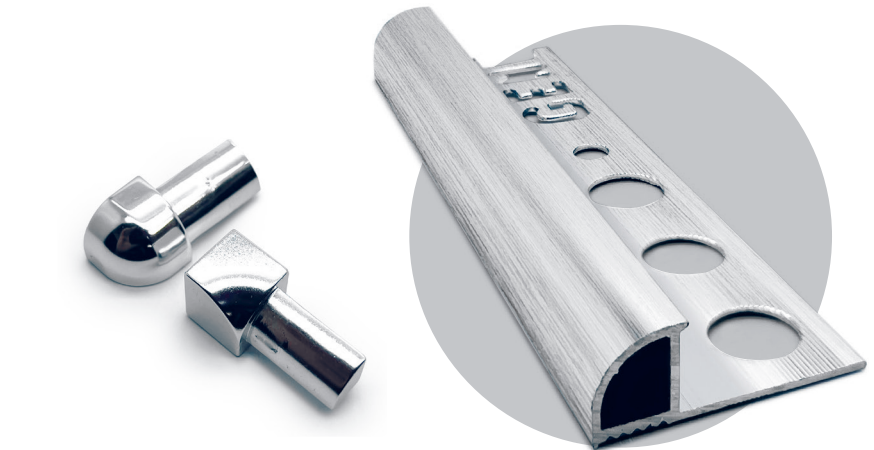
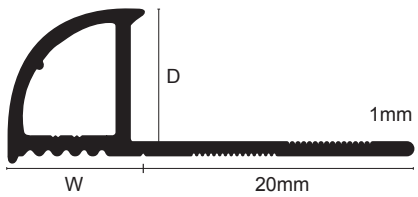


ETA



Product Description

Genesis ETA Aluminium Profile offers a perfect quadrant face. Designed to protect the edge of ceramic or similar hard surface in wall or floor installations. Designed with a vertical anchor leg to give the front face more strength.

Technical Details

Profiles are available in different anodised finishes and powder coated finishes - All natural Aluminium (Mill Finish) has a oxide film of approx. 0.2 microns, when mechanically and chemically polished the anodising process increases this to 5 microns, up-to 20 for the matt finish and 100 for powder coated.

Aluminium AA 6063 T6 / UNS A96063 anodised to DIN 17611	
Si%	0.2-0.6
Fe%	0.35
Cu%	0.1
Mn%	0.1
Mg%	0.45-0.9
Zn%	0.1
Cr%	<0.01
Al	Balance

Maintenance

Genesis ETA does not require any special maintenance. Oxidation films on Aluminium may be removed with a common polishing agent; however, they do reoccur. Damaged anodised finishes may only be repaired by re-coating.

Aluminium must be tested to verify its suitability if chemical stresses are anticipated.

Cementitious materials, in conjunction with moisture, become alkaline. Since aluminium is sensitive to alkaline substances, exposure to the alkali (depending on the concentration and time of exposure) may result in corrosion (aluminium hydroxide formation). Therefore, it is important to remove adhesive or grout residue from visible surfaces. In addition, ensure that the profile is solidly embedded in the setting material and that all cavities are filled to prevent the collection of alkaline water.

The anodised layer creates a finish that retains a uniform appearance during normal use. The surface, however, is susceptible to scratching and wear and may be damaged by tile adhesive, mortar, or grouting material. Therefore, setting materials must be removed immediately. Otherwise, the description regarding aluminium applies.

External Use

We recommend powdercoated finishes are installed externally.

Dimensions

Available in 2.5m lengths and come in depths of 6, 8, 10 and 12mm.

Installation

1. Select ETA according to tile thickness.
2. Trowel tile adhesive over the area that forms the perimeter of the tiled covering.
3. Press the perforated anchoring leg of the ETA into the tile adhesive and align, mechanical fix if required
4. Trowel additional adhesive over the perforated anchoring leg to ensure full coverage.
5. Solidly embed the tiles so that the tiled surface is flush with the top of the profile, the profile should not be higher than the tiled surface.
6. Fill the joint completely with grout.

Allied Products

ETA profiles have specially designed external corner pieces EAC and internal corner pieces EIA designed to provide a perfect rounded safe edge when mitring either profile. Available in 6*, 8, 10 and 12mm depths.

*EAC only