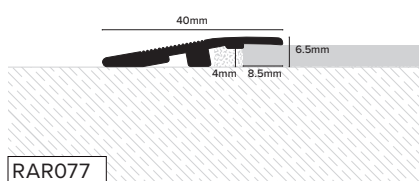
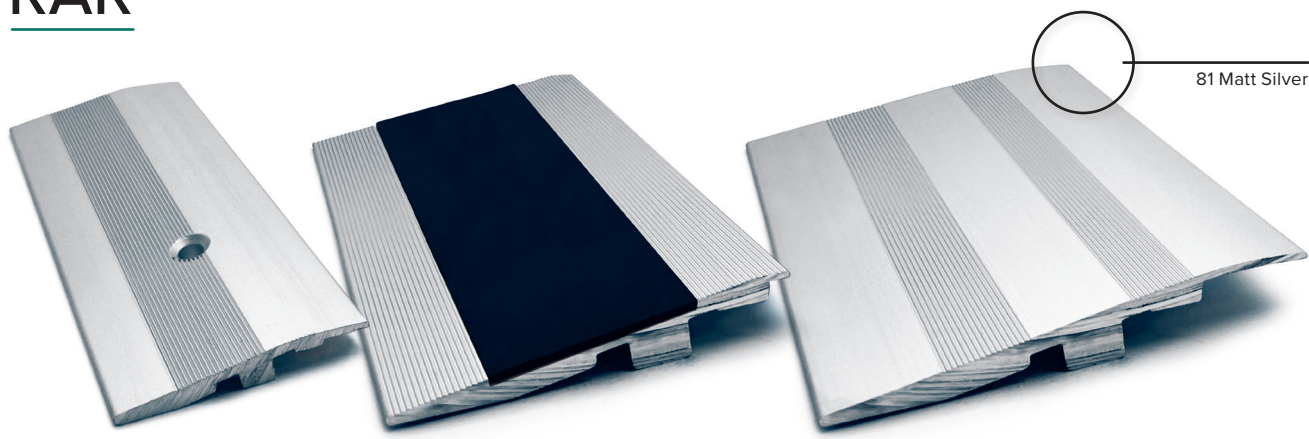


RAR



Product Description

Heavy duty aluminium ramp which provides a safe transition between flooring materials of different heights e.g. ceramic tile and vinyl.

Suitable for use in heavy traffic environments, and is ideal for use in environments subject to wheeled traffic e.g. wheelchairs and shopping trolleys.

Supplied pre-drilled (no. 6 screw) and countersunk 90mm from either end and 150mm centres.

RAR077 - for carpet tiles, loose lay PVC tiles etc.

RAR107 - available with all 38mm insert colours (see opposite)

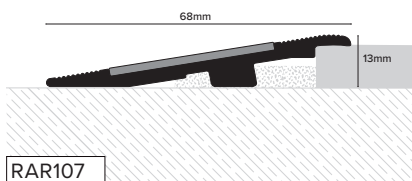
RAR157 - for easy access with pallet trucks, trolleys and wheelchairs.

The RAR profiles are deemed suitable for vehicle access if the installation instructions are followed.

Technical Details

Aluminium AA 6063 T6 / UNS A96063 anodised to DIN 17611

Si%	0.2-0.6
Fe%	0.35
Cu%	0.1
Mn%	0.1
Mg%	0.45-0.9
Zn%	0.1
Cr%	<0.01
Al	Balance



Maintenance

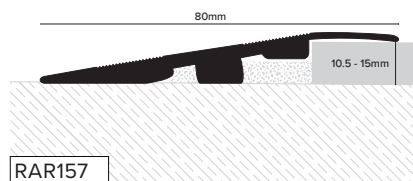
These profiles do not require any special maintenance. Oxidation films on Aluminium may be removed with a common polishing agent; however, they do reoccur.

Damaged anodised finishes may only be repaired by re-coating. Aluminium must be tested to verify its suitability if chemical stresses are anticipated.

Cementitious materials, in conjunction with moisture, become alkaline. Since aluminium is sensitive to alkaline substances, exposure to the alkali (depending on the concentration and time of exposure) may result in corrosion (aluminium hydroxide formation). Therefore, it is important to remove adhesive or grout residue from visible surfaces. In addition, ensure that the profile is solidly embedded in the setting material and that all cavities are filled to prevent the collection of alkaline water.

The anodised layer creates a finish that retains a uniform appearance during normal use. The surface, however, is susceptible to scratching and wear and may be damaged by tile adhesive, mortar, or grouting material.

Therefore, setting materials must be removed immediately. Otherwise, the description regarding aluminium applies.



Dimensions

Available in lengths of 2.7m

RAR077 Height 5 - 7mm

RAR107 Height 13mm

RAR157 Height 10.5 - 15mm

Installation

1. Cut the profile to the desired length.
2. Locate the holes and drill in the subfloor.
3. Place the plugs.
4. Position the profile and fasten with screws.

RAR107 Inserts

Standard

01 White	44 Ice Grey
16 Black	46 Midnight Grey
20 Brown	47 Yellow
25 Beige	48 Cobalt Blue
27 Canvas	58 Cloud
30 Red	68 Haze
43 Dolphin Grey	78 Sand

Tredsafe®

601 White	643 Dolphin Grey
616 Black	647 Yellow
621 Safety Blue	