



Llanerch Vineyard Hotel Vale of Glamorgan

Project Specifications

Products Specified: **NALR50.27**
Vision Single White System

Colours: **Canvas**

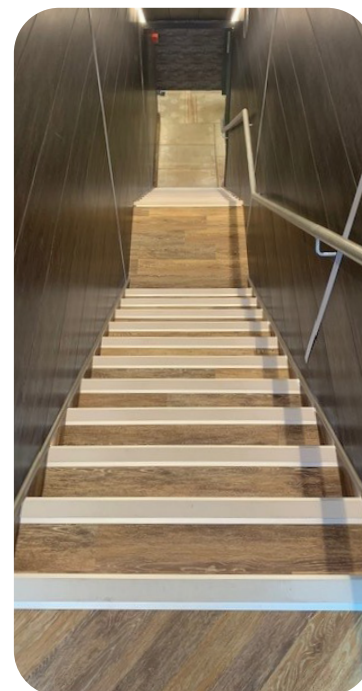
Sector: **Hospitality**

Project Description

As part of the redevelopment of Llanerch Vineyard Hotel in the Vale of Glamorgan, attention was recently turned to a key feature within the hotel, the staircase leading to the refurbished dining balcony. Requiring a solution that blended safety with high-end aesthetics to complement the venue's premium dining environment, the project centred around the integration of the 'NALR' Vision Light Down Stair Nosing profile from Genesis. Selected for its striking visual appeal and robust performance characteristics, the NALR Stair Nosing was paired with 4.8W Natural White LED tape, delivering both enhanced visibility and a stylish finish.

Offering a lifespan of 40,000 hours, the LED tape provides practical durability, while its 3M VHB backing guaranteed maximum adhesion during installation and the IP65 rating of the lighting system ensures resistance to dust and low-pressure water jets.

Carpet Fit Wales expertly managed the installation of the complete Vision system to ensure seamless illumination. The result was a dramatic and sophisticated staircase upgrade that not only improved safety but also elevated the overall ambience of the dining space.



vision