



## Case Study - Education

University Accommodation, Coventry, CV1 5JR

### Project Specifications

Products Specified: NTC10322

Insert Colours – NIA50.81 Mill Finish

Sector: Education

### Project Description

In the heart of Coventry City Centre a total of 14 new studio flats have been built on what was a vacant patch of land on Berry Street in Hill fields.

This new construction was ideally placed and designed around student accommodation, with easy access to key routes and public transport.

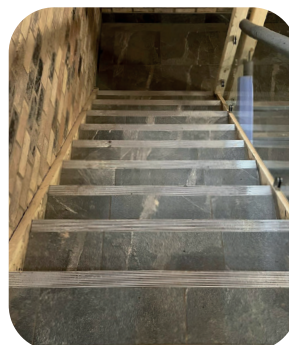
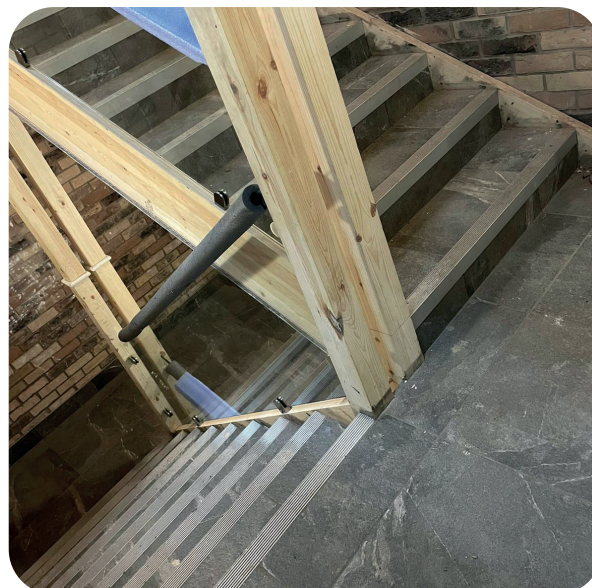
Saffron Homes UK Ltd installed ceramic tiles on all staircases, and this required a suitable nosing - NTC stair nosing from Genesis with NIA50 aluminum insert provided an excellent LRV rating along with the perfect solution.

This was especially important as the ceramic tile choice was dark Grey in colour.

The stair nosing not only provided essential protection for the ceramic edge, it also prevents slips and falls when using the staircase.

Now complete, the project looks amazing with a superb finish and reliable products.

Distribution - Ambiance



+44 (0)1642 713000 [info@genesis-gs.com](mailto:info@genesis-gs.com)  
[www.genesis-gs.com](http://www.genesis-gs.com)

 **Genesis**  
 For the Perfect Finish